

DATE	REVISION	BY
NOV. 11, 2011	VALUE ENGINEERING RE-DESIGN DOCUMENT	
JAN. 28, 2012	REVISIONS ASSOCIATED WITH REVISED FLOOR PLAN	

DESIGN DOCUMENTS ARE THE PROPERTY OF VALUE ENGINEERING RE-DESIGN DOCUMENT. THESE DOCUMENTS ARE TO BE USED ONLY FOR THE PROJECT AND SITE SPECIFICALLY IDENTIFIED IN THESE DOCUMENTS. ANY REUSE OR MODIFICATION OF THESE DOCUMENTS WITHOUT THE WRITTEN PERMISSION OF VALUE ENGINEERING RE-DESIGN DOCUMENT IS STRICTLY PROHIBITED. THE USER ASSUMES ALL LIABILITY FOR PROBLEMS WHICH MAY BE CAUSED BY THE USE OF THESE DOCUMENTS. THE USER AGREES TO INDEMNIFY AND HOLD HARMLESS VALUE ENGINEERING RE-DESIGN DOCUMENT FROM AND AGAINST ALL CLAIMS, DAMAGES, LOSSES AND EXPENSES, INCLUDING REASONABLE ATTORNEY'S FEES, ARISING OUT OF OR RESULTING FROM THE USE OF THESE DOCUMENTS.

PROJECT NO. 8529-02
DESIGNED BY RCD
DRAWN BY TBW
CHECKED BY RCD
REVIEWED BY
DATE JULY 2011
SCALE 1/8" = 1'-0"

**Value Engineering Re-Design Document**

**Professional Engineer Seal**

**Professional Architect Seal**

**Professional Planner Seal**

**Professional Engineer Seal**

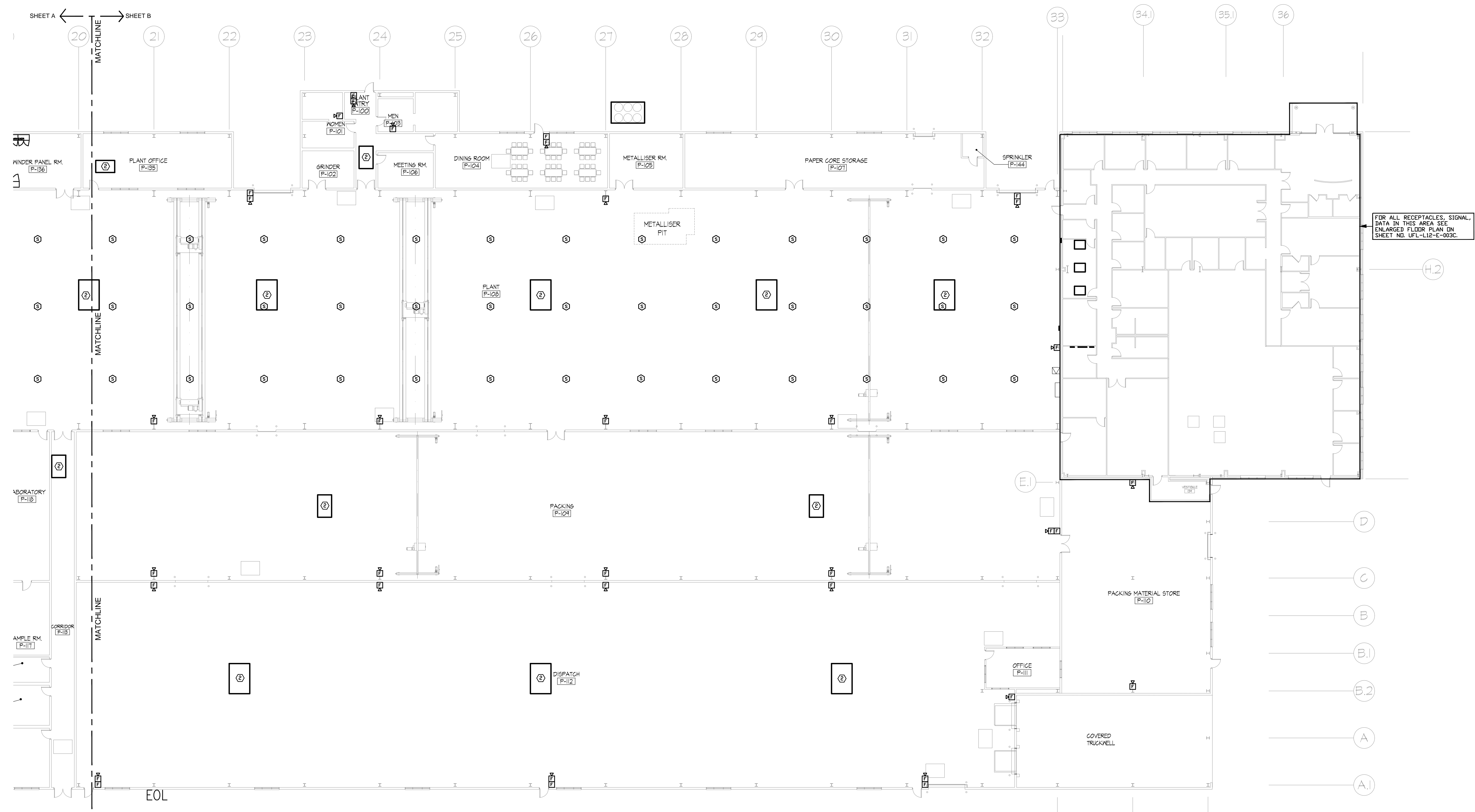
**Professional Engineer Seal**

**nse**  
OF KENTUCKY, INC.  
824 Wellington Way  
Lexington, KY 40503  
www.nseflex.com

Phone: (859) 223-2804  
Fax: (859) 223-2807

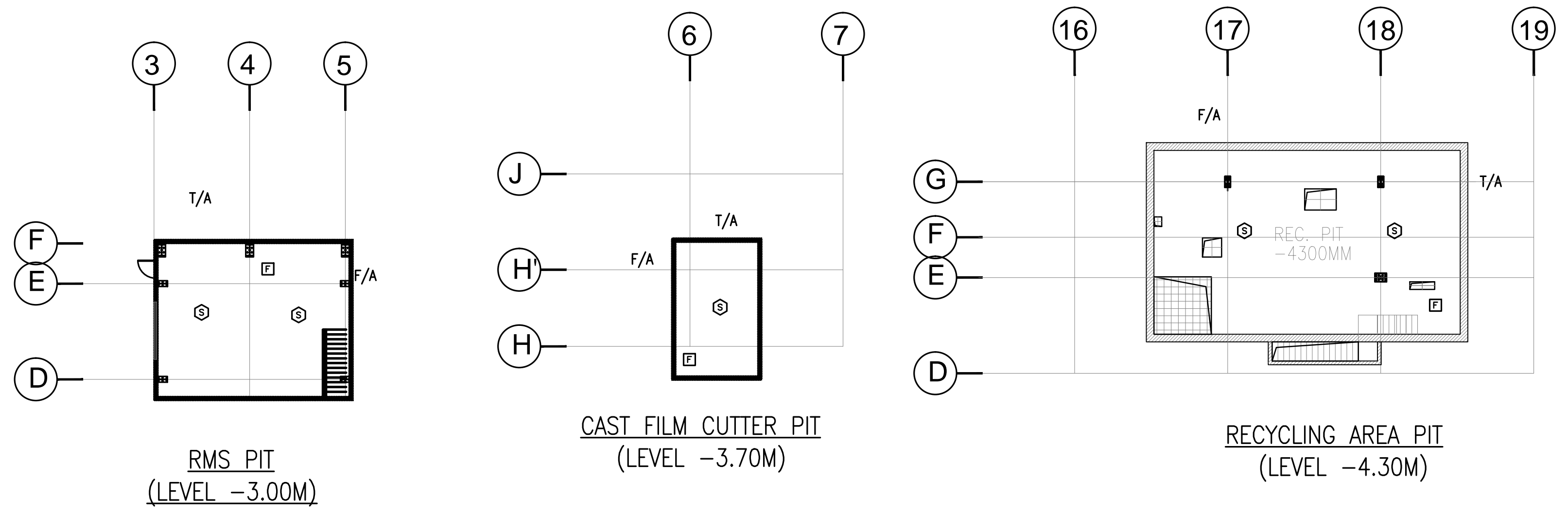
**FIRE ALARM LEGEND**

SYMBOL	DESCRIPTION
(S)	SMOKE DETECTOR (ADDRESSABLE)
(H)	HEAT DETECTOR (ADDRESSABLE)
(MM)	MONITOR MODULE
(F)	BREAK GLASS UNIT
(FACP)	4 LOOP ADD. FIRE ALARM CONTROL PANEL
(F)	A/V FIRE ALARM DEVICE
(V)	STROBE FLASHER



FOR ALL RECEPTABLES, SIGNAL, DATA IN THIS AREA SEE ENLARGED FLOOR PLAN ON SHEET NEI UFL-L12-E-002C.

**PARTIAL FIRE ALARM FLOOR PLAN**  
SCALE: 1/16" = 1'-0"



**METALLIZER PIT PLAN**  
SCALE: 1/16" = 1'-0"

**SHEET NOTES**  
① SMOKE DETECTOR IN SUPPLY AND RETURN DUCT.  
② SMOKE DETECTOR IN RETURN DUCT.